

## IDEA-URL-10-18-08

Generic output terminal for the actuation of conventional electrical devices

€550.00 + VAT



## PRODUCT SHEET

The **IDEA-URL-10-18-08 control unit** fits into ref.\* D 13.01.10.

### 8 DIN modules

Generic output terminal for actuating conventional electrical devices (e.g., lamps, etc.), designed to control up to 8 independent users (or groups of users). Equipped with manual contact control, contact status reporting, and the ability to configure actuation priorities, activation/deactivation delays, and preferred positions in the event of a fault.

Dimensions: 8-module DIN modular profile.

Power supply: 220 V AC -10/+15%, 50 Hz.

Breaking power: - 8 x 10 A;

Degree of protection: IP 20.

Operating temperature: -5/45 °C;

Installed according to the rules of the art.

Programmable input-output control

Relays: 8 with a maximum of 10 A at 24 VAC or 250 VAC

screw terminals for normally open and normally closed contacts

I/O - 8 channels, choice of VFC input or NPN output.

Inputs: 8 channels.

Communication – WiFi - RJ45 Ethernet for normal access

Power supply: 2.1mm 12V DC socket (adapter sold separately)

Best regards

*Open Idea*

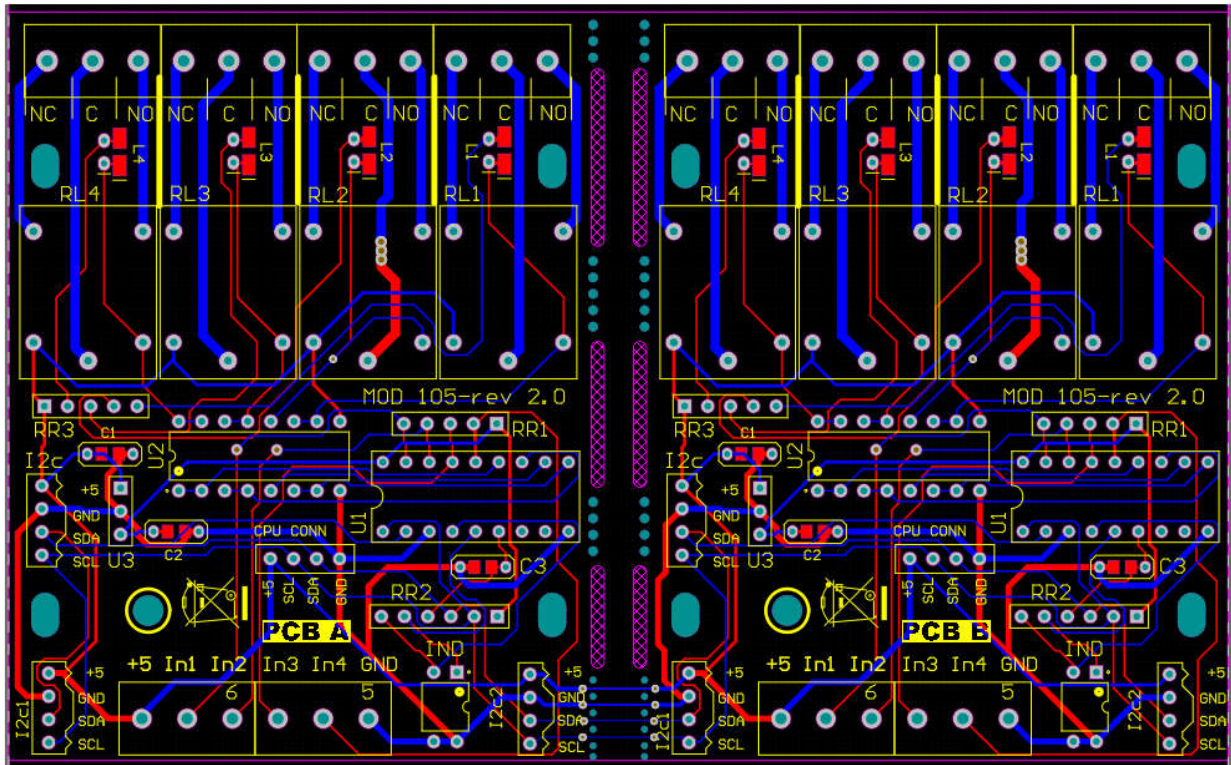


**Idea Open srl**

Via Casilina Sud n.182 - 03013 - Ferentino FR VAT number and tax code 02780900607

[www.ideaopen.it](http://www.ideaopen.it) [ideaopensrl@gmail.com](mailto:ideaopensrl@gmail.com)

Page 1of 2



### Idea Open srl

Via Casilina Sud n.182 - 03013 - Ferentino FR VAT number and tax code 02780900607

[www.ideaopen.it](http://www.ideaopen.it) [ideaopensrl@gmail.com](mailto:ideaopensrl@gmail.com)